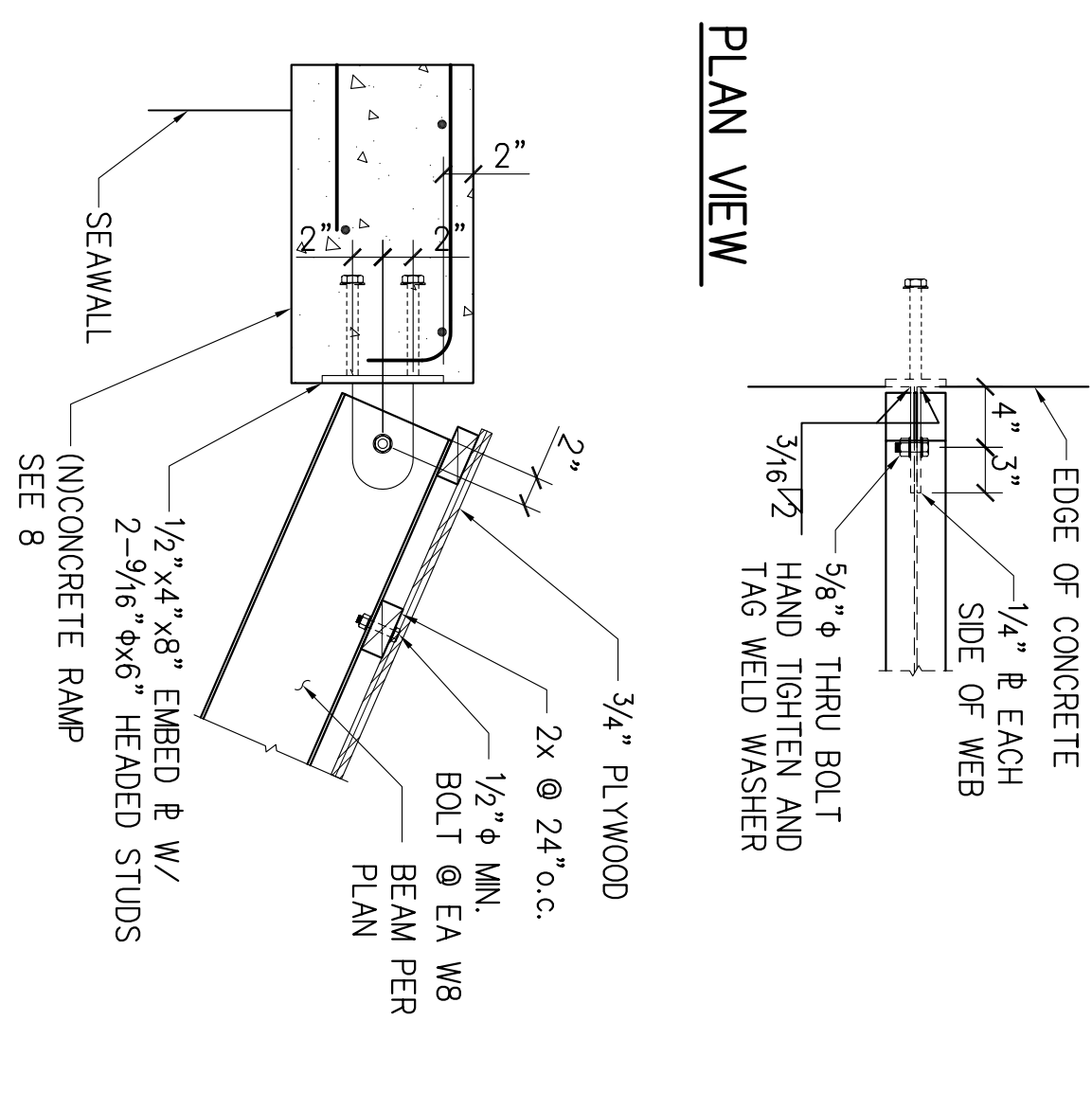
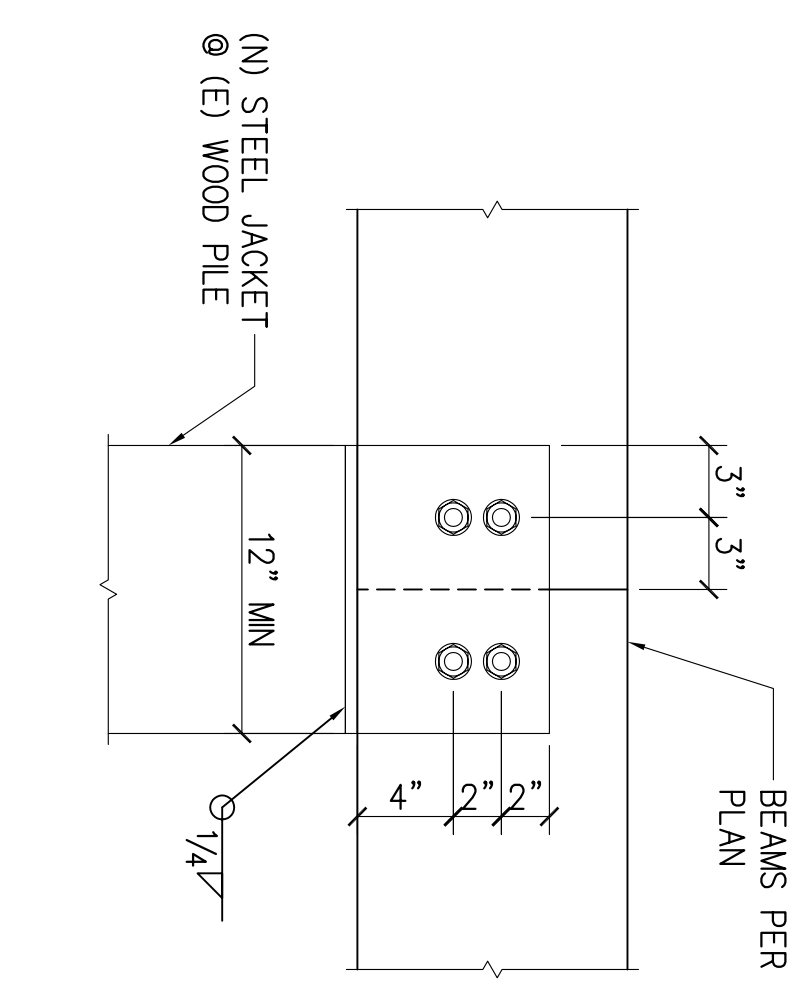


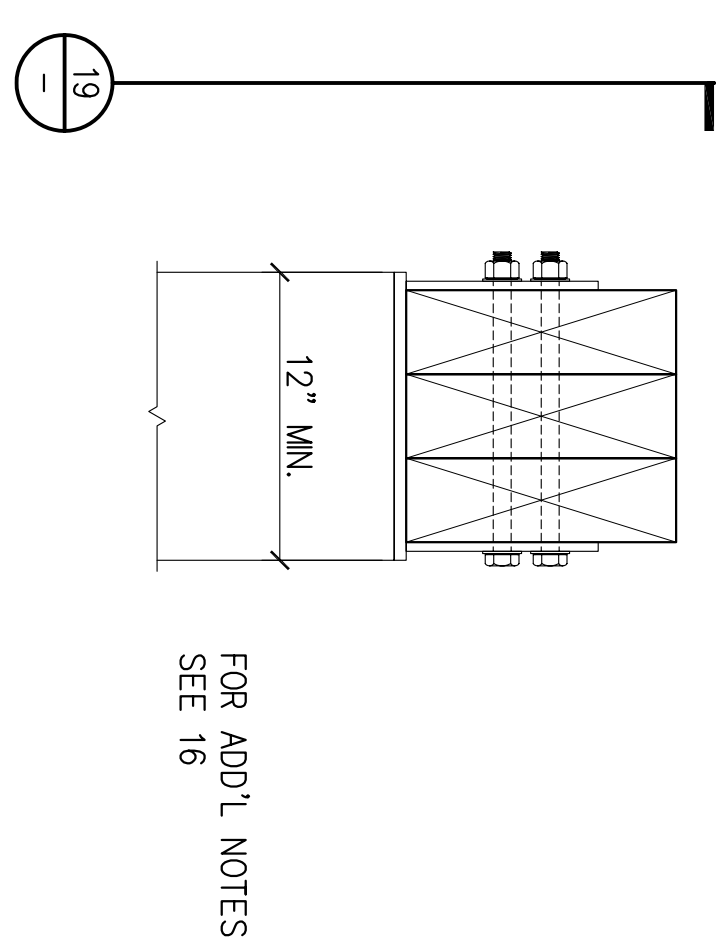
16 INT BEAM TO POST CONNECTION
1 1/2\"/>



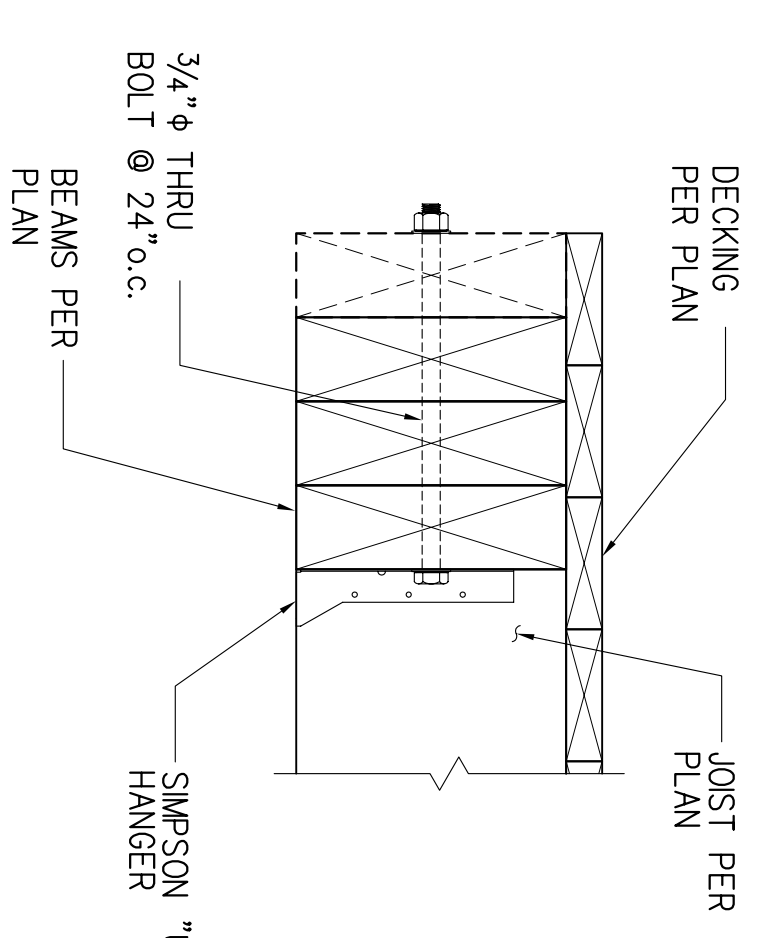
12 RAMP PIN CONNECTION ELEVATION
1\"/>



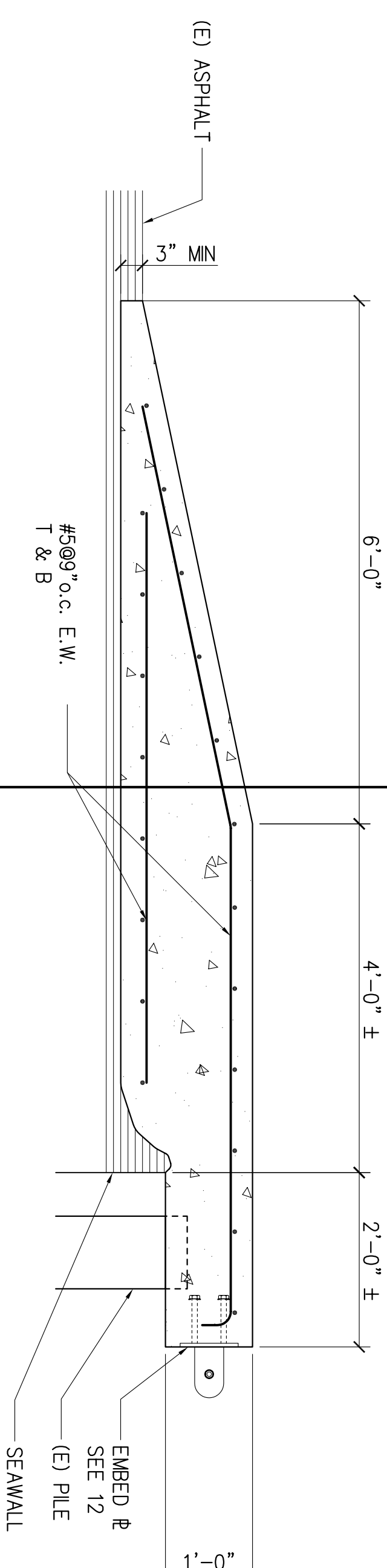
19 BEAM TO POST CONNECTION
1 1/2\"/>



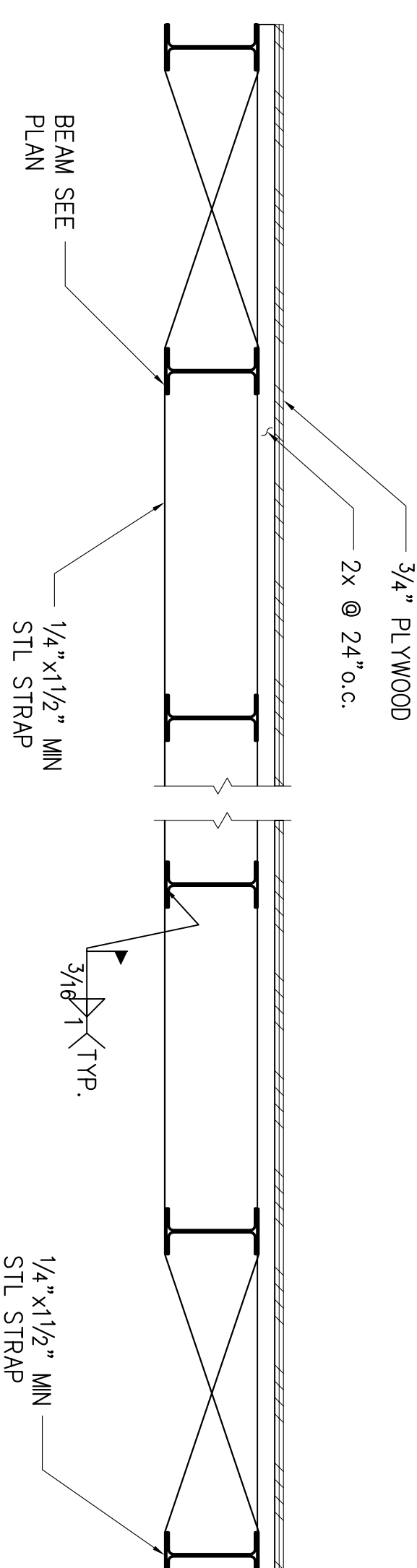
15 EXT BEAM TO POST CONNECTION
1 1/2\"/>



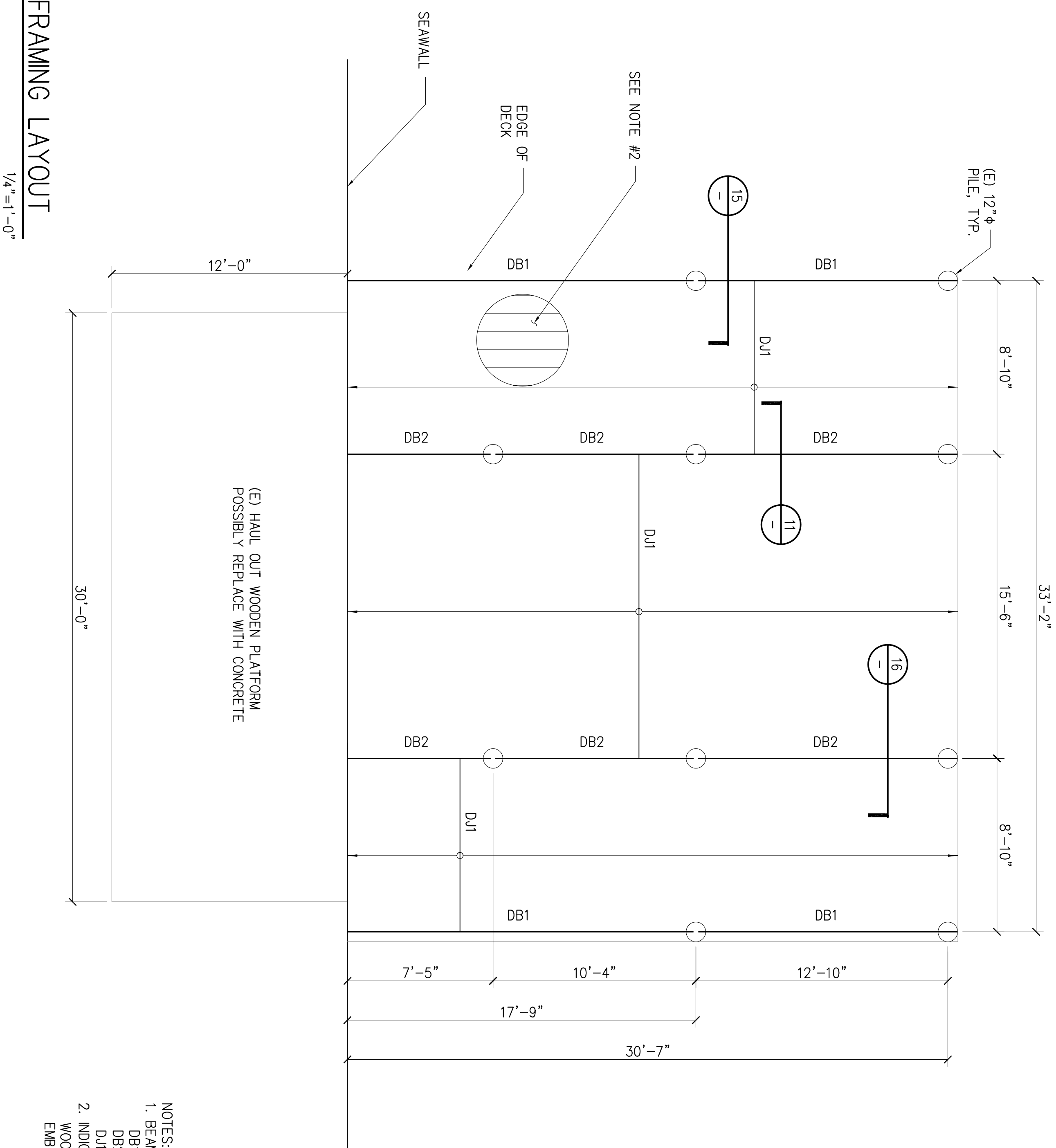
11 JOIST TO BEAM CONNECTION
1 1/2\"/>



8 CONCRETE RAMP SECTION
3/4\"/>

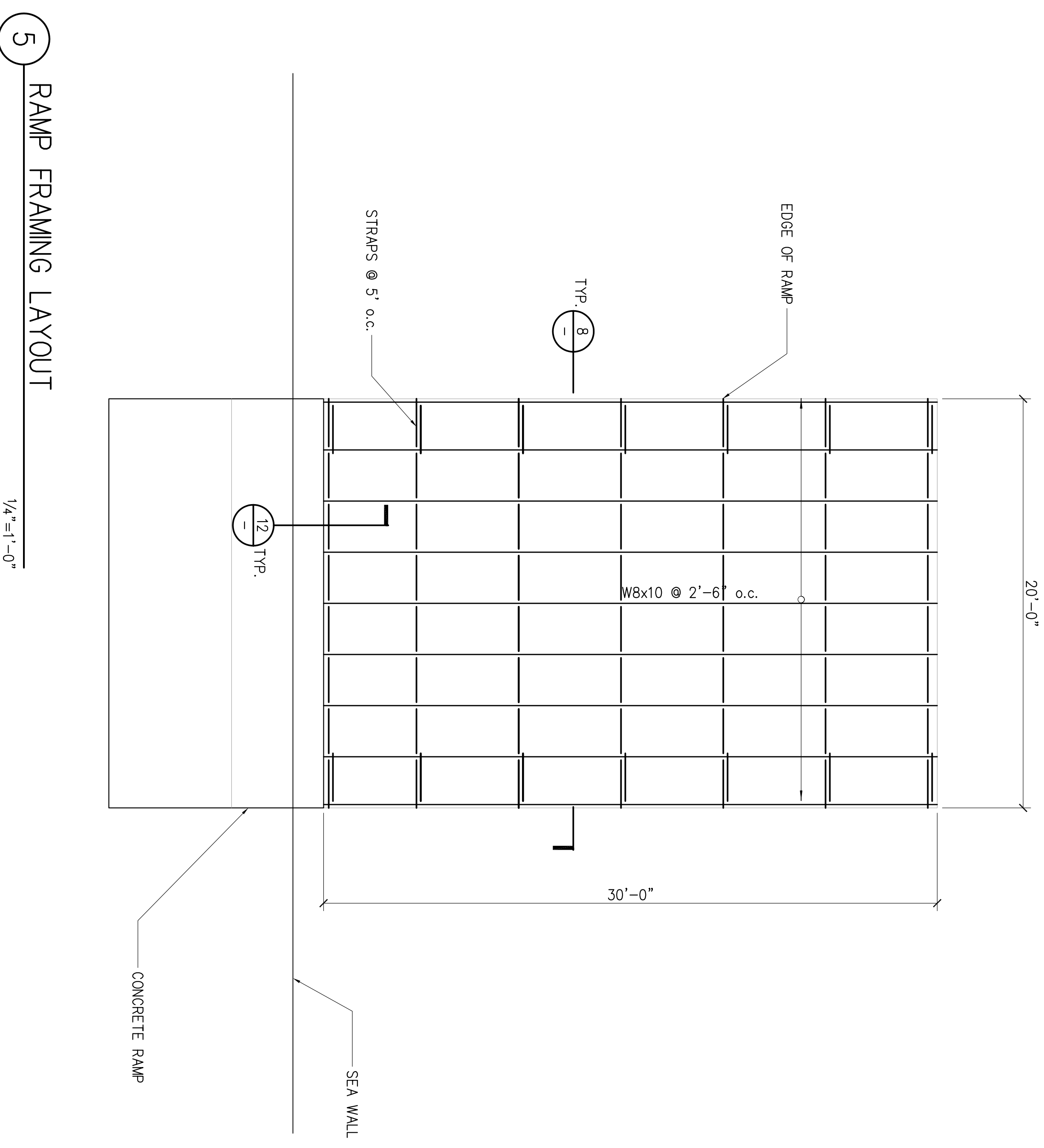


7 STEEL RAMP SECTION
1\"/>

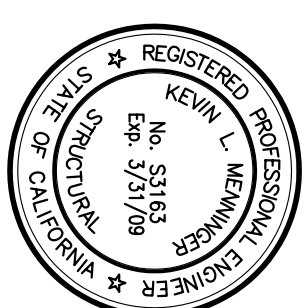


17 HAUL OUT DECK FRAMING LAYOUT
1/4\"/>

- NOTES:
1. BEAM AND JOIST SCHEDULE:
DB1: 3-4x12 PT. DF-1 No.1
DB2: 4-4x12 PT. DF-1 No.1
D11: 2x12 PT. DF-1 No.1 @ 16\"/>



5 RAMP FRAMING LAYOUT
1/4\"/>



NISHKIAN MENNINGER
CONSULTING AND STRUCTURAL ENGINEERS SINCE 1919
1200 Polson Street, San Francisco, CA 94103
Tel: (415) 541-9477 Fax: (415) 543-9071

BAIR ISLAND AQUATIC CENTER

REDWOOD CITY, CALIFORNIA

HAUL OUT DECK AND RAMP: PLANS AND DETAILS

PROJECT:	022131
DATE:	04-04-07
SCALE:	AS NOTED
SHEET:	S2